

Monthly Weather Summary in Thailand March 2022

In March 2022, the weather remained cool in the morning in the northern and northeastern parts during early month with cold weather in some areas. Meanwhile, daytime temperature in central part obviously increased and successive hot weather was found since March 2 which regarded as the beginning of summer in Thailand. During that time, the heat low pressure cell dominated over upper Thailand and then occasionally covered the mentioned areas causing intermittent hot weather in upper Thailand with very hot weather in some areas of the northern part. For rainfall, due to the influence of the high pressure area from China extended its ridge to cover upper Thailand, the passage of the westerly trough over the northern and upper northeastern parts accompanied with the southerly and southeasterly winds which prevailed over upper Thailand was strengthened for few days. These caused unusual rainfall mainly during the second half of the month with thundershower and gusty wind in several areas. In southern part, rainfall was mainly observed during early and mid-month due to the influence of the active easterly and southeasterly winds prevailed over the Gulf of Thailand and the southern part at that time. Monthly rainfall was above normal in all parts of the country i.e. northern part 44.1 mm (136%), northeastern part 38.2 mm (85%), central part 40.7 mm (97%), eastern part 36.4 mm (55%), southern part (east coast) 16.1 mm (19%) and southern part (west coast) 83.8 mm (81%). Mean temperature of March were slightly above normal in almost regions except for in the southern part (west coast) was below normal.

1 – 10 March: The weak high pressure areas from China covered upper Thailand and the South China Sea on the first day of the period then the heat low pressure cell covered upper Thailand and the southerly and southeasterly winds prevailed over the mentioned areas. In addition, another moderate high pressure areas extended to cover upper Thailand during March 7-9. Cool weather remained in the northern and northeastern parts during early and late period with cold weather in some areas. The lowest minimum temperature was 12.2 °C at Umphang in Tak province on March 1. However, daytime temperature was increased in majority areas of upper Thailand with hot weather in almost areas and very hot weather in some areas of the northern part. The highest maximum temperature was 40.0 °C at Thoen in Lampang province on March 5 and at Amphoe Mueang in Lamphun province on March 6. For rainfall, there was scanty rain in upper Thailand for few days except for fairly widespread rain with heavy to very heavy rainfall in some areas on March 7. The maximum daily rainfall was 108.0 millimeters at Nong Bua Health Center, Phattana Nikom in Lop Buri province on March 7. Gusty wind were reported in Surin, Chaiyaphum and Phetchabun provinces on March 5, in Phichit, Phetchabun, Kamphaeng Phet and Sakon Nakhon provinces on March 6, in Chiang Rai, Chiang Mai, Lampang, Phrae, Nan, Phayao, Uttaradit, Phitsanulok, Kamphaeng Phet, Loei, Nong Khai, Udon Thani, Nong Bua Lam Phu, Kalasin, Amnat Charoen, Si Sa Ket, Yasothorn, Nakhon Ratchasima, Ang-Thong, Sing Buri and Nakhon Nayok provinces on March 7 and in Mae Hong Son province on March 10, with flash flooding in Loei province on March 7. For

southern part, easterly and southeasterly winds prevailed over the Gulf of Thailand and the southern part almost of the period and strengthened during mid-period causing plentiful of rain during that time. The highest daily rainfall was 94.4 millimeters in Ko Samui, Surat Thani province on March 8.

11 – 20 March: The heat low pressure cell covered upper Thailand almost the period accompanied with the prevailing of the southerly and southeasterly winds over the lower northern, northeastern, central and eastern parts throughout the period. Besides, the westerly trough moved to cover the northern and upper northeastern part during March 15-16. These caused generally hot weather in upper Thailand during early and mid-period with very hot weather in some areas of the northern part after that temperature decreased in majority areas. The highest maximum temperature was 40.5 °C at Amphoe Mueang in Phetchabun province on March 14. For rainfall, unexpected rainfall was found in upper Thailand mainly during the middle and the end of the period especially on March 16, 18 and 20 that received scattered to fairly widespread rain with heavy rainfall in some areas. The highest daily rainfall of 119.6 mm was recorded at Amphoe Mueang in Surin province on March 18. Gusty wind were reported in Chiang Rai province on March 11, in Sukhothai province on March 12, in Tak province on March 13, in Chiang Mai, Chiang Rai and Phitsanulok provinces on March 14, in Tak, Nan, Phayao, Loei, Udon Thani, Nong Bua Lam Phu, Kalasin and Nakhon Ratchasima provinces on March 15, in Nan, Uttaradit, Kamphaeng Phet, Nakhon Ratchasima, Amnat Charoen, Ubon Ratchathani, Chaiyaphum, Surin, Si Sa Ket, Uthai Thani and Chai Nat provinces on March 16, in Chiang Rai, Phayao, Lampang, Surin and Si Sa Ket provinces on March 17, in Mae Hong Son, Phrae, Phetchabun, Phitsanulok, Nong Khai, Yasothon, Nakhon Sawan, Ang-Thong, Sing Buri, Saraburi and Prachin Buri provinces on March 18 and in Lamphun province on March 19. For southern part, the easterly and southeasterly winds which prevailed over the Gulf of Thailand and the southern part had strengthened during late period, the low pressure cell covered the head of Sumatra Island during March 18-19 and the low pressure cell in the middle Bay of Bengal had intensified into the tropical depression on the last day of the period. Abundant rainfall was observed during late period with fairly widespread rain and heavy to very heavy rainfall in some areas. The highest daily rainfall of 90.7 millimeters was measured at Ron Phibun in Nakhon Si Thammarat province on the March 20 and gusty wind was reported in Pattani province on March 20.

21 – 31 March: During this period, rainfall was relatively increased by the effect of the tropical depression over the Bay of Bengal making landfall at Myanmar in the evening of the March 22 and later weakened into the intense low pressure cell covering the west coast of Myanmar inducing southerly and southeasterly winds which prevailed over the lower northern, northeastern, central and eastern regions strengthened during that time. In addition, the high pressure area from China extended its ridge to cover the eastern of northern, northeastern and the South China Sea during late period while hot weather existed in upper Thailand. These conditions caused unusual rainfall in upper Thailand with decreasing in temperature. Scattered to fairly widespread rain was observed in upper Thailand with isolated heavy to very heavy rainfall in some areas during early period after that rainfall relatively decreased and became abundant rainfall again during March 28-29

with scattered rain with heavy rainfall in some areas. The maximum daily rainfall in upper Thailand was 136.7 millimeters at Manorom in Chai Nat province on March 23. Gusty wind were reported in Kamphaeng Phet, Roi Et, Udon Thani and Chai Nat provinces on March 23, in Nakhon Sawan province on March 24, in Udon Thani and Kalasin provinces on March 25, in Phetchabun, Chaiyaphum, Khon Kaen and Maha Sarakham provinces on March 26, in Chiang Rai, Phayao, Mukdahan, Nakhon Ratchasima, Roi Et, Buriram, Surin, Si Sa Ket, Nakhon Phanom, Nong Bua Lam Phu, Amnat Charoen and Yasothon provinces on March 27, in Phitsanulok, Kamphaeng Phet, Lampang, Chai Nat and Kanchanaburi provinces on March 28, in Nan and Uthai Thani provinces on March 29, in Sukhothai, Kalasin and Yasothon provinces on March 30, and in Chachoengsao, Rayong and Chon Buri provinces on March 31. For southern part, the easterly and southeasterly winds which prevailed over the Gulf of Thailand and the southern part was strengthened during early period, abundant rainfall was found during that time with the highest daily rainfall of 80.5 millimeters at Takua Thung, Phang-nga province on March 22. Gusty wind was found in Surat Thani province on March 29 with flash flooding in Krabi province on March 23. However, hot weather remained in upper Thailand in particularly the northern and central parts that observed generally hot weather during the middle and the end of the period while hot weather persisted in many areas for the rest parts. The highest maximum temperature was of 39.6 °C at Thap Phueng sub-district, Sri Samrong in Sukhothai province on March 26.

Note : Rainfall, temperatures and natural disasters in this report were updated up to April 5, 2022.

Climatological Center
Meteorological Development Bureau
Meteorological Department

Monthly Current Report
Rainfall and Accumulative Rainfall
March 2022

Northern Thailand

Station	Temperature (°c)		Rainfall (mm)		Accumulative rainfall (mm) Since 1 January	
	Mean	Above or below normal	Actual	Above or below normal	Actual	Above or below normal
Chiang Rai	27.0	2.2	33.9	0.1	164.4	101.4
Mae Hong Son	29.3	2.5	18.1	-1.1	50.3	14.6
Phayao	28.2	1.7	87.3	52.5	143.4	86.9
Chiang Mai	29.4	2.1	47.0	26.6	107.6	66.3
Tha Wang Pha	27.4	1.3	242.1	203.2	333.3	271.7
Nan	28.5	1.4	194.6	157.3	246.7	186.3
Lamphun	29.1	1.3	61.8	44.5	120.8	90.6
Lampang	30.1	1.9	28.1	0.4	78.9	27.8
Mae Sariang	28.6	1.8	21.7	2.5	46.1	10.4
Phrae	29.3	1.4	92.3	60.5	166.9	110.0
Uttaradit	30.0	1.2	2.7	-26.7	106.8	56.7
Bhumibol Dam	29.4	-0.4	27.6	-3.3	136.2	90.8
Tak	30.0	-0.3	36.3	16.9	111.5	76.4
Mae Sot	28.8	1.3	28.9	8.0	103.4	68.2
Umphang	25.6	1.0	115.8	59.9	236.9	161.9
Phitsanulok	29.6	0.5	18.2	-10.7	134.5	82.0
Lom Sak	28.6	0.4	77.8	36.3	107.8	43.2
Phetchabun	29.3	0.4	97.7	47.0	136.7	59.8
Wichian Buri	29.3	-0.3	282.9	234.3	307.5	232.3
Kamphaeng Phet	29.6	0.7	16.1	-24.3	168.8	110.3
Over the area	28.9	1.1	76.5	44.1 136%	150.4	97.3 183%

Northeastern Thailand

Station	Temperature (°c)		Rainfall (mm)		Accumulative rainfall (mm) Since 1 January	
	Mean	Above or below normal	Actual	Above or below normal	Actual	Above or below normal
Nong Khai	28.2	0.3	193.3	149.6	367.9	296.2
Loei	27.3	0.2	117.7	78.7	205.2	144.7
Udon Thani	28.4	0.2	36.7	-13.2	61.9	-15.6
Nakhon Phanom	27.7	0.3	50.7	-10.5	78.9	-7.5
Sakon Nakhon	27.5	0.0	62.8	6.5	103.2	13.4
Mukdahan	27.9	-0.2	64.4	21.8	105.6	42.0
Khon Kaen	28.4	-0.2	47.4	9.4	96.4	35.1
Kosum Phisai	28.9	0.2	44.7	-3.1	65.4	-3.1
Roi Et	28.6	0.1	112.9	69.9	135.7	74.5
Chaiyaphum	29.1	0.0	119.7	69.3	167.5	101.0
Ubon Ratchathani	29.0	0.0	70.3	41.6	114.5	71.7
Tha Tum	28.5	-0.4	48.9	6.0	77.0	13.8
Surin	29.1	0.2	187.2	140.0	259.7	196.3
Nakhon Ratchasima	29.5	0.3	67.4	21.2	77.4	9.9
Chok Chai	29.2	0.4	91.5	54.9	129.5	72.6
Nang Rong	28.7	0.0	13.6	-31.6	86.0	18.3
Over the area	28.5	0.1	83.1	38.2 85%	133.2	66.4 99%

- NOTES :
- 1) Mean temperature is the average of daily dry-bulb temperature
 - 2) "T" is trace, rainfall amount less than 0.1 mm.
 - 3) "blank" is incomplete data.
 - 4) Temperature and rainfall are preliminary data.

Monthly Current Report
Rainfall and Accumulative Rainfall
March 2022

Central Thailand

Station	Temperature (°c)		Rainfall (mm)		Accumulative rainfall (mm) Since 1 January	
	Mean	Above or below normal	Actual	Above or below normal	Actual	Above or below normal
Nakhon Sawan	30.4	0.1	62.9	27.4	163.2	109.8
Bua Chum	29.4	-0.2	161.0	119.7	228.4	167.2
Lop Buri	30.2	0.5	36.5	-0.4	61.4	6.2
Suphan Buri	30.2	0.9	18.0	-9.8	35.8	-2.5
Thong Pha Phum	29.1	0.2	125.8	72.6	174.1	102.3
Kanchanaburi	30.0	0.1	108.3	69.0	240.5	175.3
Bangkok Airport	29.8	0.0	75.4	23.9	199.8	120.0
Bangkok Metropolis	30.2	0.5	74.8	23.8	224.5	128.5
Over the area	29.9	0.2	82.8	40.7 97%	166.0	100.8 155%

Eastern Thailand

Station	Temperature (°c)		Rainfall (mm)		Accumulative rainfall (mm) Since 1 January	
	Mean	Above or below normal	Actual	Above or below normal	Actual	Above or below normal
Prachin Buri	29.9	0.2	69.7	19.2	147.3	75.4
Kabin Buri	29.0	-0.1	179.3	124.7	227.0	137.7
Aranyaprathet	29.6	-0.2	104.0	45.5	244.6	150.7
Chon Buri	29.3	-0.1	117.9	62.4	170.3	82.5
Ko Sichang	28.4	-0.4	34.6	-12.0	93.2	5.7
Pattaya	28.4	0.1	27.0	-20.3	159.8	77.1
Sattahip	28.5	-0.2	189.8	130.7	407.3	293.4
Rayong	29.1	0.1	54.1	-16.4	148.8	16.8
Chanthaburi	28.6	0.3	113.0	29.2	249.9	102.7
Khlong Yai	28.3	0.2	139.4	0.6	347.8	78.1
Over the area	28.9	0.0	102.9	36.4 55%	219.6	102.0 87%

- NOTES :
- 1) Mean temperature is the average of daily dry-bulb temperature
 - 2) "T" is trace, rainfall amount less than 0.1 mm.
 - 3) "blank" is incomplete data.
 - 4) Temperature and rainfall are preliminary data.

Monthly Current Report
Rainfall and Accumulative Rainfall
March 2022

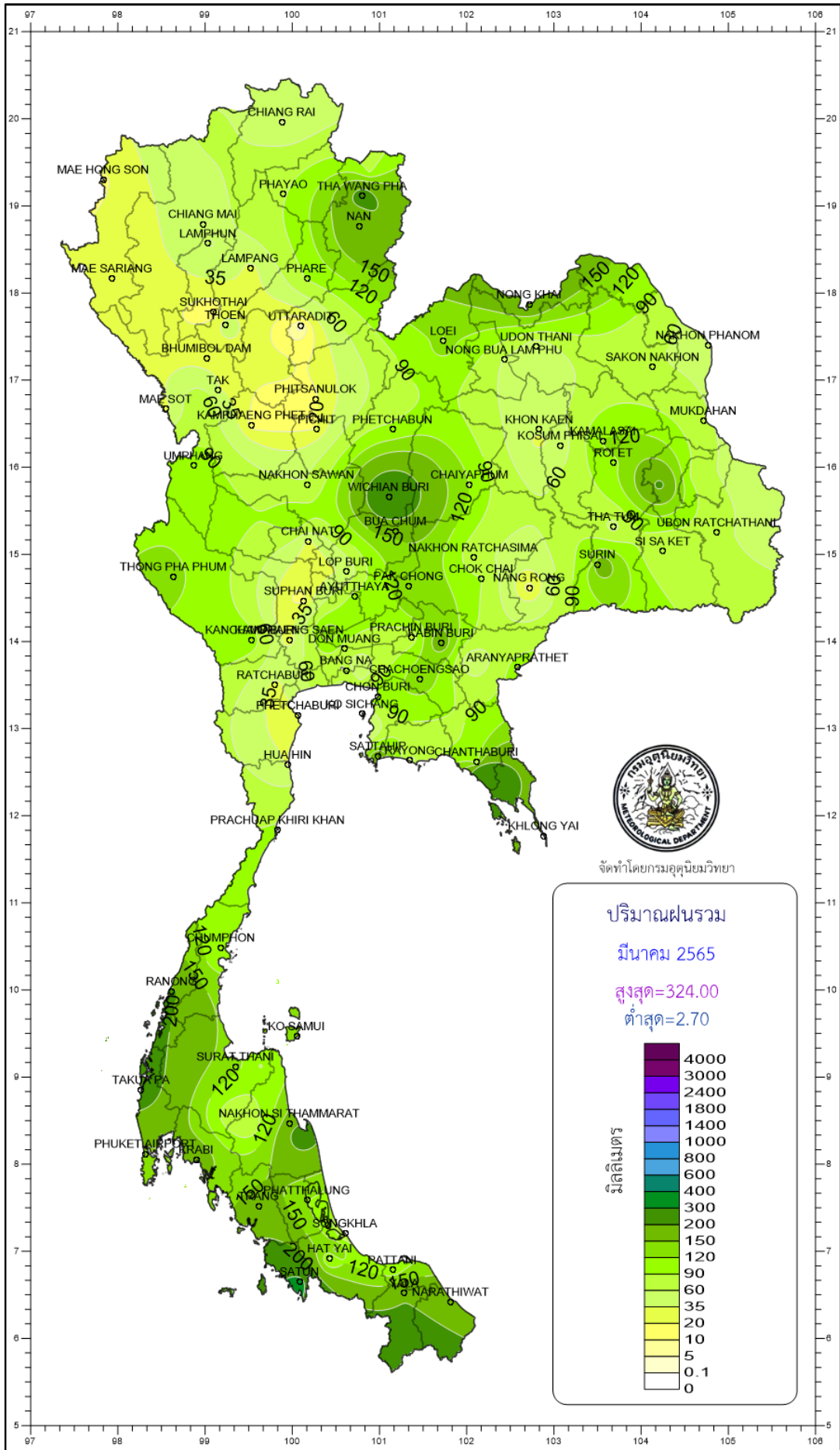
Southern Thailand, east coast

Station	Temperature (°c)		Rainfall (mm)		Accumulative rainfall (mm) Since 1 January	
	Mean	Above or below normal	Actual	Above or below normal	Actual	Above or below normal
Phetchaburi	28.8	0.0	24.3	-19.6	233.9	169.2
Hua Hin	28.8	0.3	33.3	-17.2	225.9	136.6
Prachuap Khiri Khan	28.7	0.5	94.5	18.3	401.3	258.3
Chumphon	28.0	0.1	104.0	-6.2	416.5	158.3
Surat Thani	27.8	0.0	131.0	68.3	373.9	222.7
Ko Samui	28.4	0.2	131.5	15.7	406.9	100.9
Nakhon Si Thammarat	27.8	0.3	170.6	31.8	689.6	211.7
Songkhla	28.4	0.3	57.0	-14.3	379.0	125.5
Hat Yai Airport	27.6	0.0	84.4	7.1	402.6	207.1
Pattani Airport	27.9	0.4	99.7	45.6	470.8	286.5
Narathiwat	27.6	0.2	177.3	47.5	742.8	356.9
Over the area	28.2	0.2	100.7	16.1 19%	431.2	203.0 89%

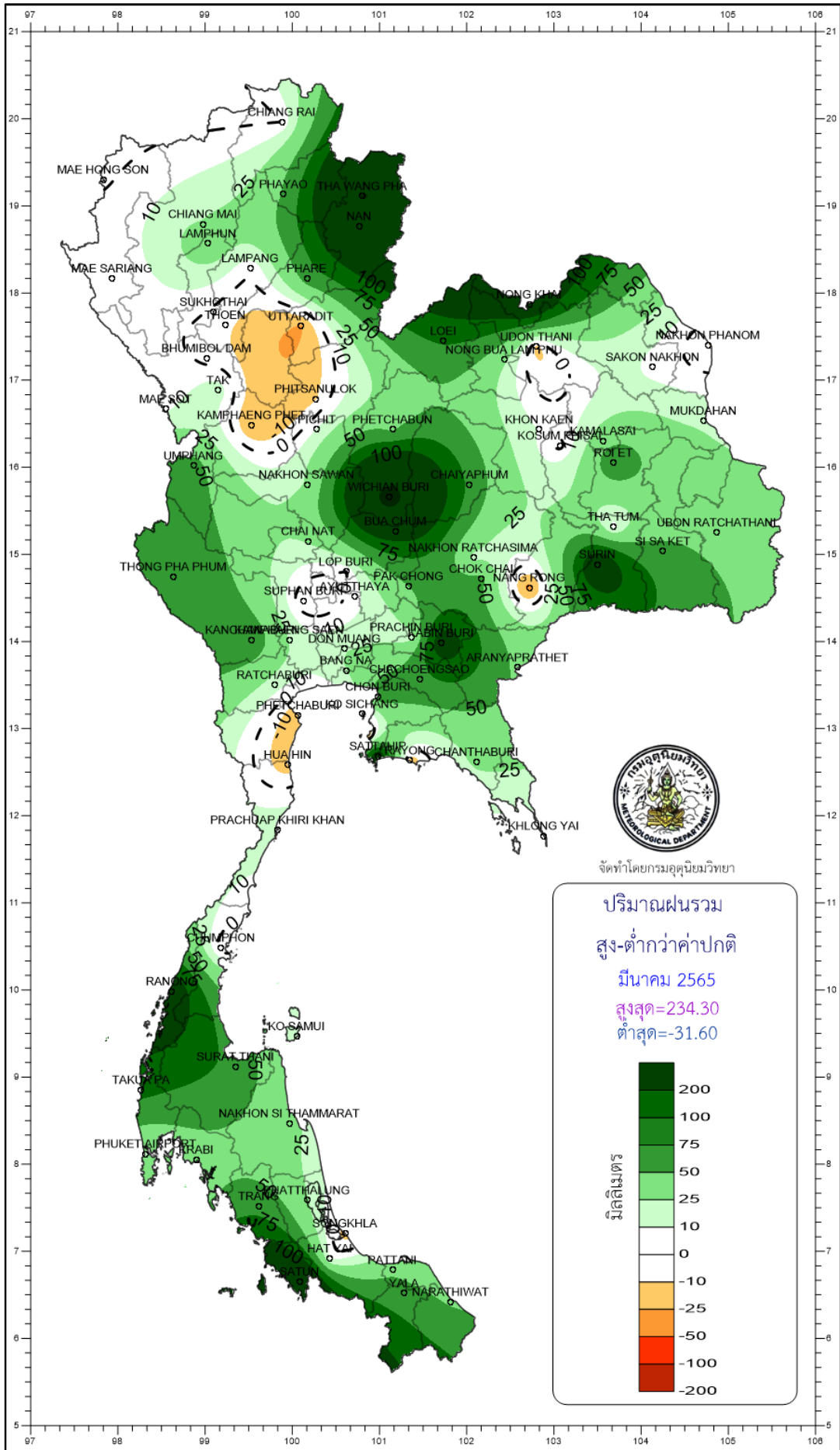
Southern Thailand, west coast

Station	Temperature (°c)		Rainfall (mm)		Accumulative rainfall (mm) Since 1 January	
	Mean	Above or below normal	Actual	Above or below normal	Actual	Above or below normal
Ranong	28.4	-0.1	206.1	128.5	376.7	238.5
Takua Pa	27.7	-0.1	228.3	83.2	441.2	189.0
Phuket	29.5	0.1	123.0	42.3	229.3	75.4
Phuket Airport	28.4	-0.1	140.5	23.3	287.1	72.4
Ko Lanta	28.1	-0.7	119.8	50.8	234.0	111.9
Trang Airport	28.0	-0.3	167.9	68.0	389.6	208.2
Satun	28.1	-0.5	324.0	190.1	443.1	226.0
Over the area	28.3	-0.3	187.1	83.8 81%	343.0	160.2 88%

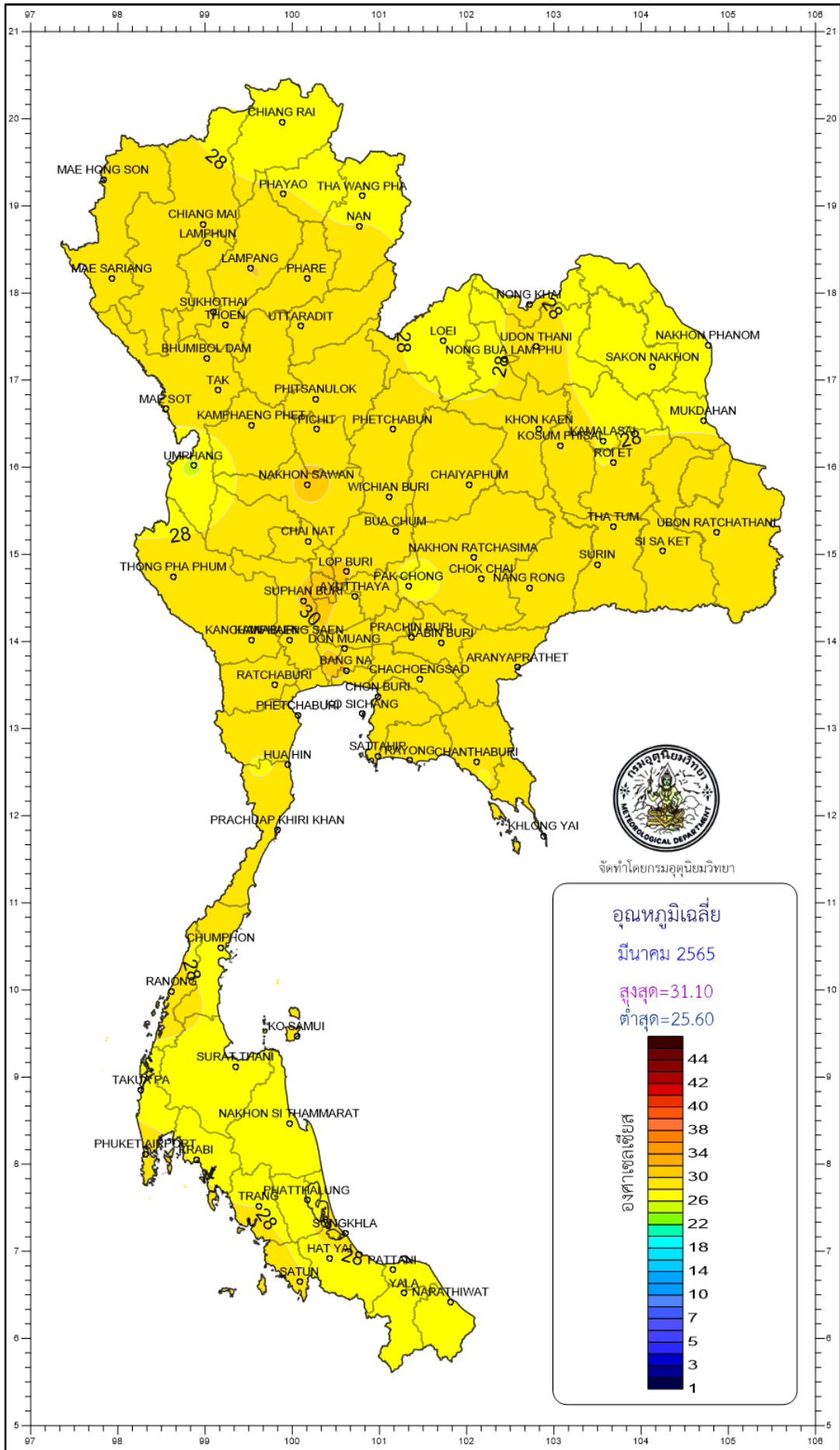
- NOTES :
- 1) Mean temperature is the average of daily dry-bulb temperature
 - 2) "T" is trace, rainfall amount less than 0.1 mm.
 - 3) "blank" is incomplete data.
 - 4) Temperature and rainfall are preliminary data.

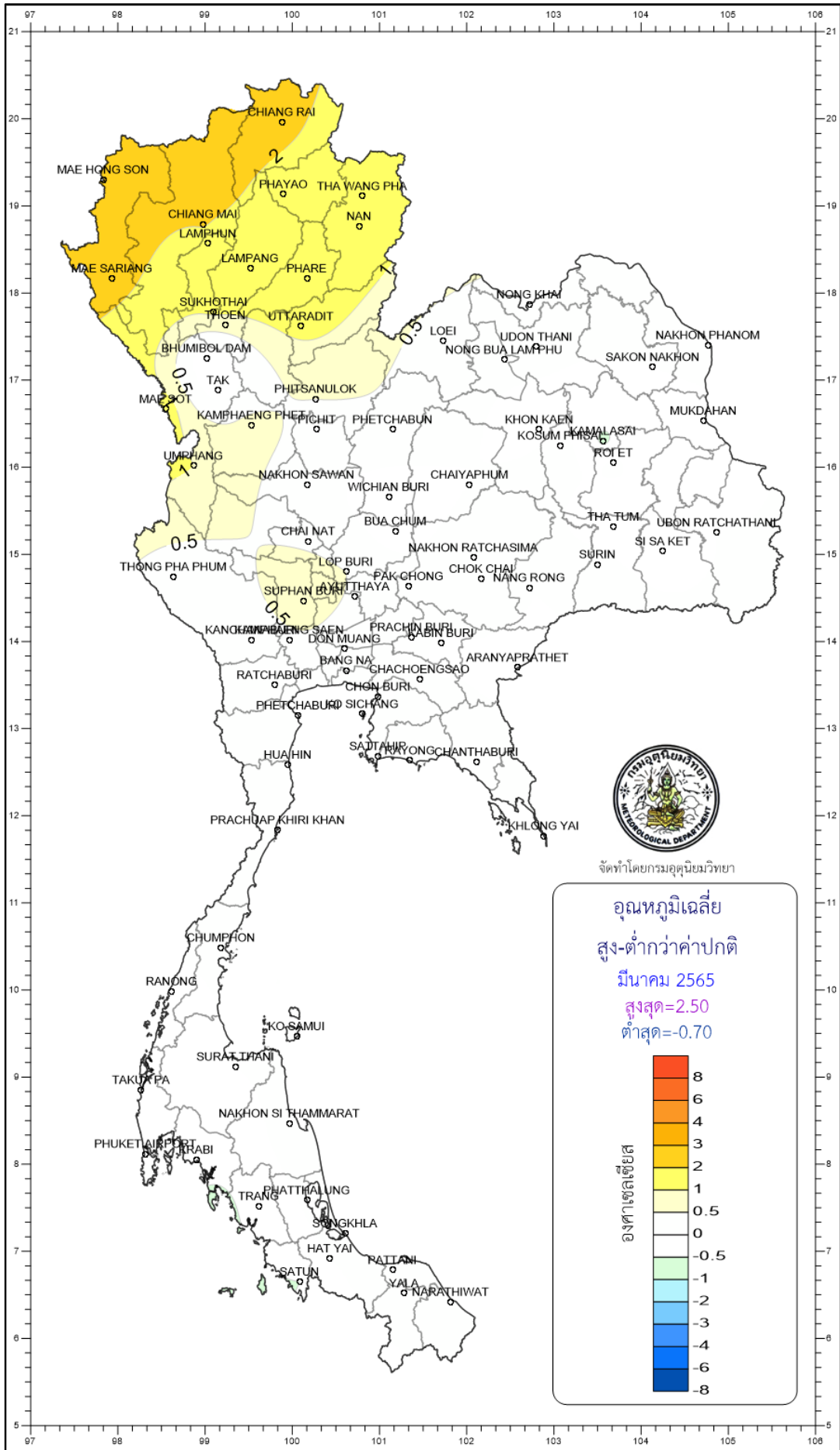


จัดทำโดยกรมอุตุนิยมวิทยา

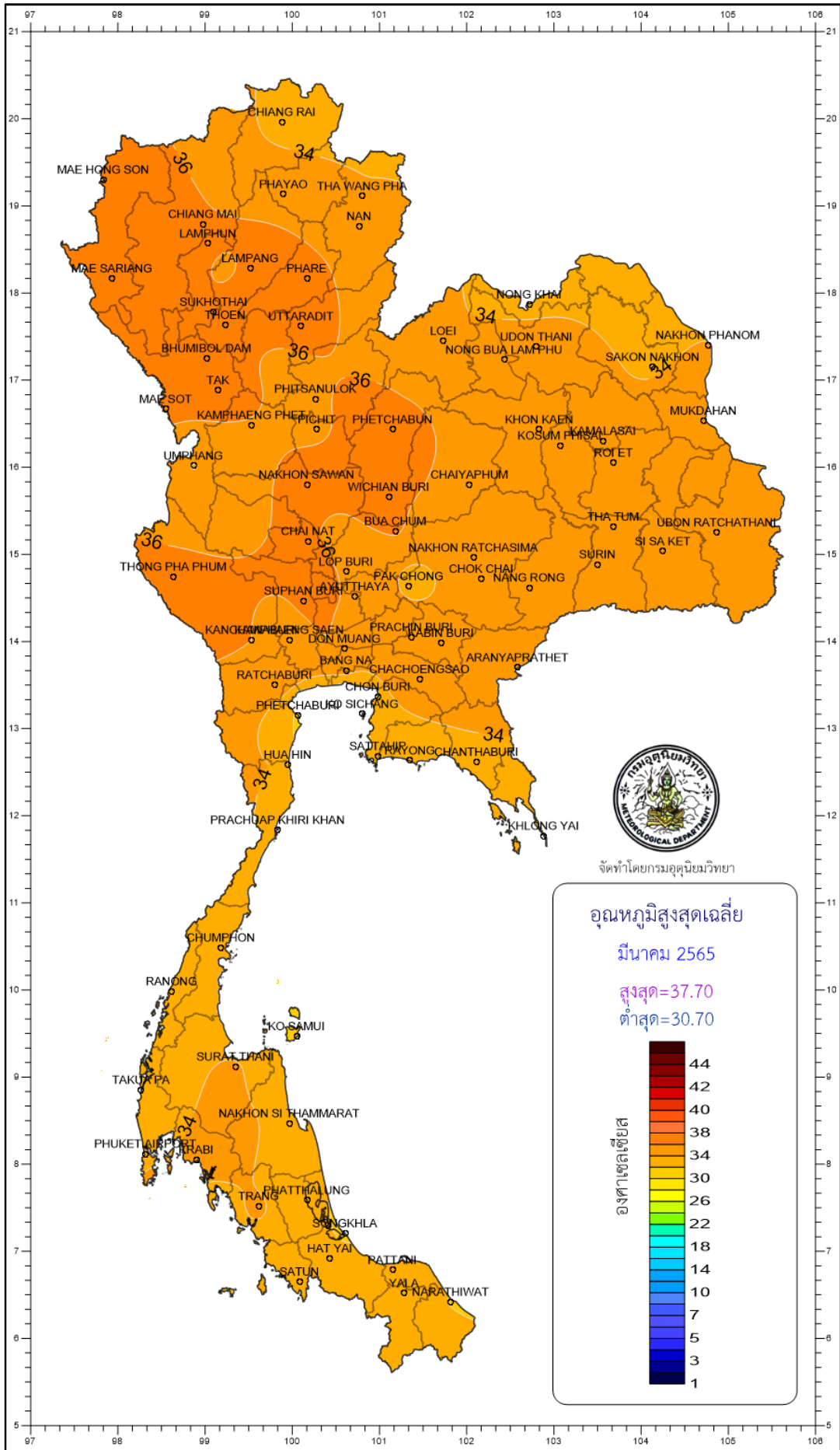


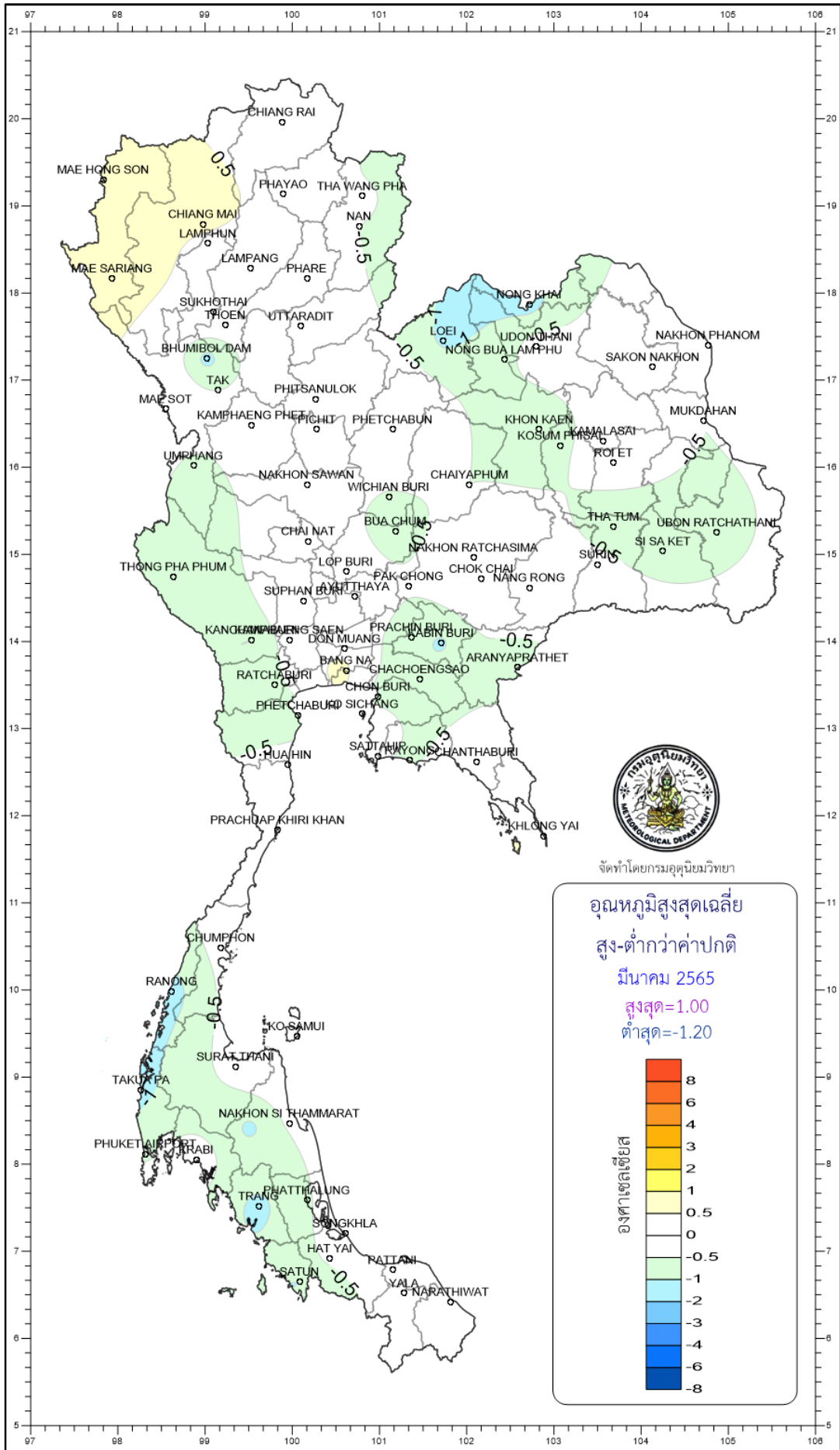
จัดทำโดยกรมอุตุนิยมวิทยา





จัดทำโดยกรมอุตุนิยมวิทยา



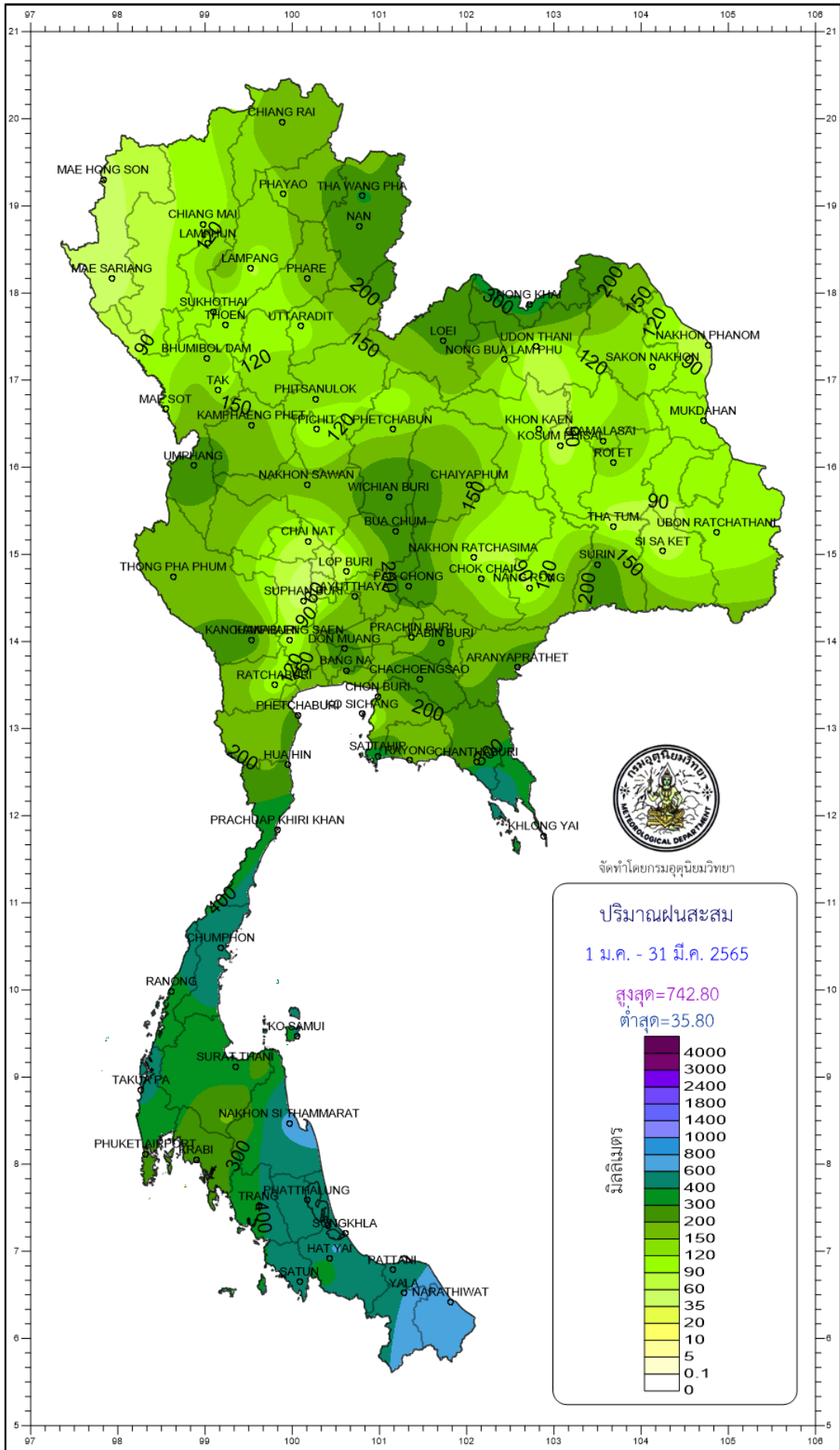


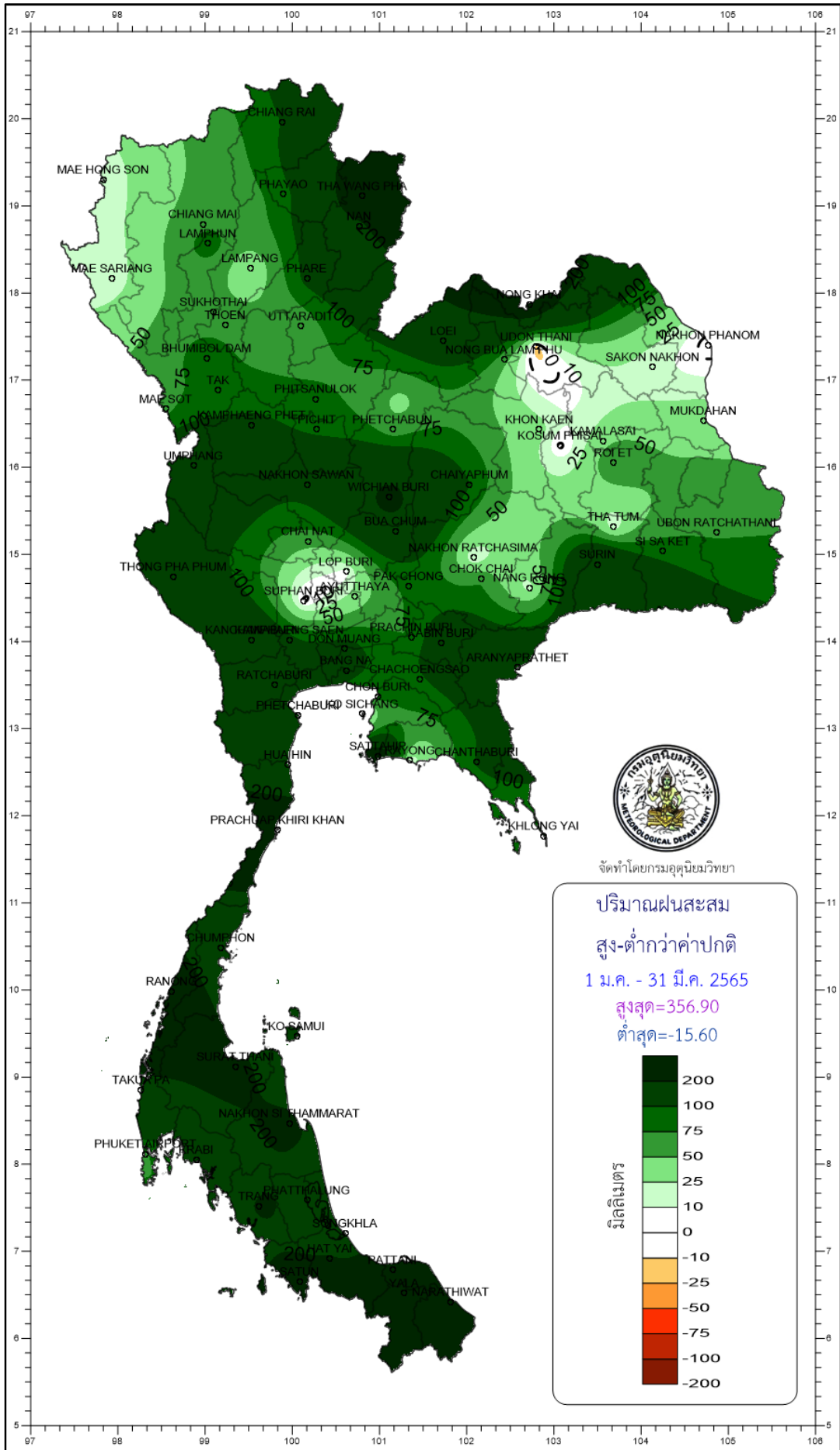
จัดทำโดยกรมอุตุนิยมวิทยา

อุณหภูมิสูงสุดเฉลี่ย
สูง-ต่ำกว่าค่าปกติ
มีนาคม 2565
สูงสุด=1.00
ต่ำสุด=-1.20

องศาเซลเซียส

8
6
4
3
2
1
0.5
0
-0.5
-1
-2
-3
-4
-6
-8





จัดทำโดยกรมอุตุนิยมวิทยา

ปริมาณฝนสะสม
สูง-ต่ำกว่าค่าปกติ
1 ม.ค. - 31 มี.ค. 2565
สูงสุด=356.90
ต่ำสุด=-15.60

มิลลิเมตร

200
100
75
50
25
10
0
-10
-25
-50
-75
-100
-200